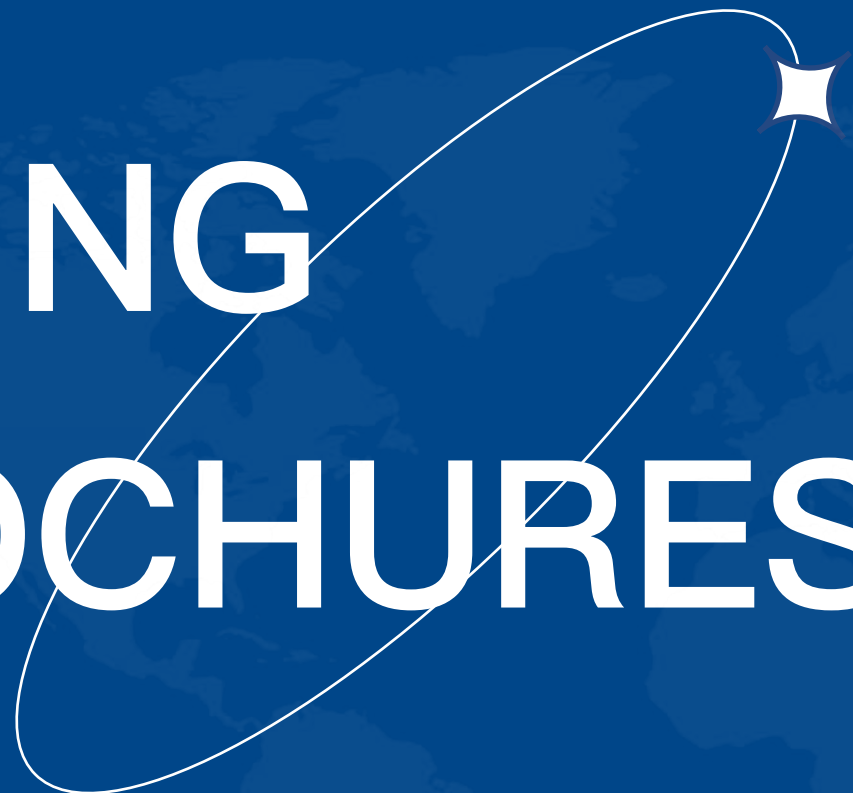


FAMILY OWN-
ENTERPRISE

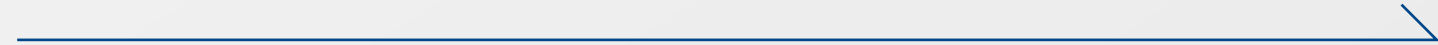
LIGHT POLES AND PIPE FITTING PRODUCT BROCHURES



FOCUS ON PROFESSIONAL POWDER COATING SYSTEM SOLUTION

Professional Quality Excellent Service ● ○ ○

Since 1990, Hanna Technology have grown into a star company in powder coating field.



-COMPANY INTRODUCTION-

Since 1990, Hanna Technology have grown into a star company in powder coating field. All HANNA's solutions are designed individually to meet the customized needs of our customers. From the initial design drawing to delivery, you don't have to worry about anything with HANNA's strong support. Moreover, we provide installation, commissioning and training service until your system is operating successfully.

Hinah
— MANUFACTURE SINCE 1990 —

FAMILY OWN ENTERPRISE
Focus On Professional Powder Coating System Solution

★★★★★



-ABOUT US-



The factory covers an area of 10,000 square meters and employs more than 80 people. The company has passed ISO9001 quality management system certification, ISO4001 environmental management system certification, and ISO18000 occupational health and safety management system certification.

DESIGN → PRODUCTION → INSTALLATION → AFTER-SALES SERVICE



-OUR STAFF-

Hanna get a strong team to rock your core, including coating system designers, powder and chemistry experts, control systems engineers, installation technicians and experienced trainers. With Hanna's powerful team support, you would not have to worry.



QUALIFICATION HONOR

OUR CERTIFICATE



–DEVELOPMENT HISTORY–**1990**

Zhongyuan Coating Machinery Research Institute established.

2000

Zhongyuan changed name to Zhanyao Company.

2010

Zhongyuan changed name to Zhanyao Company.

2014

The export department is established.

2016

We are rated as high-tech enterprises of Hebei Province.

2018

Apply for more than 80 authorized patents on metal surface treatment industry.

2020

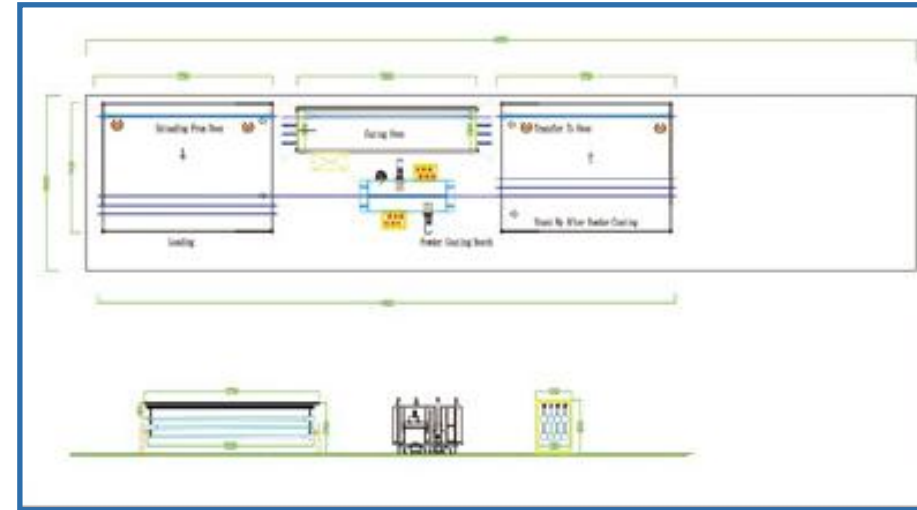
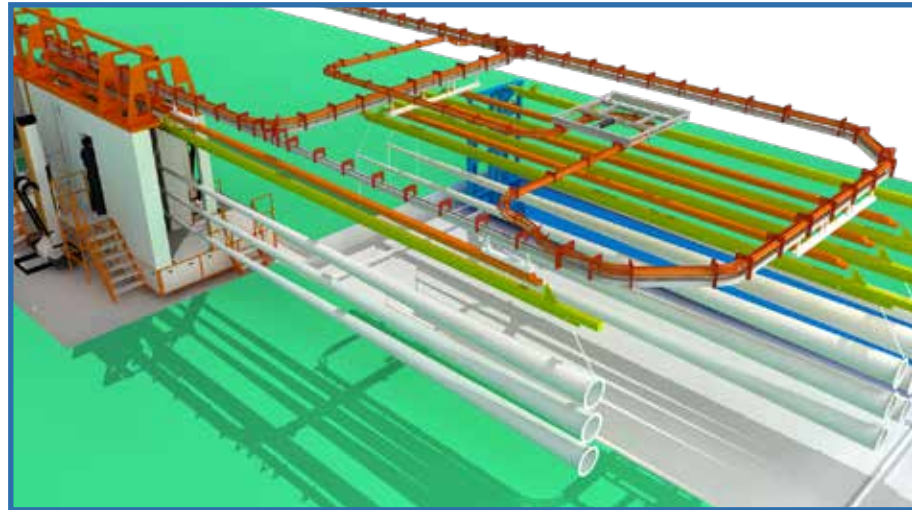
Awarded as intelligent plant by the government.

2021

By 2021, Our equipment has been exported to more than 30 countries and more than 10 projects with more than 1 million dollars.

-LIGHT POLES, PIPE FITTINGS-

○ Daily maintenance



○ Factory Show



Project name: Semi automatic powder coating line
Products: Lamp pole
Product max.size: L12
mHang height: 1400mm
Design Capacity: 80-100pcs/10h
The space size: L65*W10m
Heating source: LPG

Hanna



Manual Powder Coating Line

filter recovery booth
powder curing oven



-LIGHT POLES,PIPE FITTINGS-

○ Packing&shipping



Hanna



○ Project display

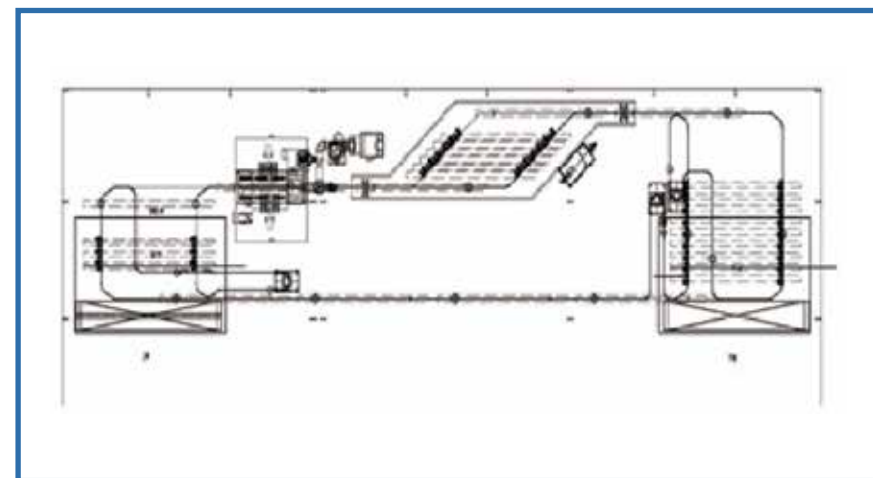
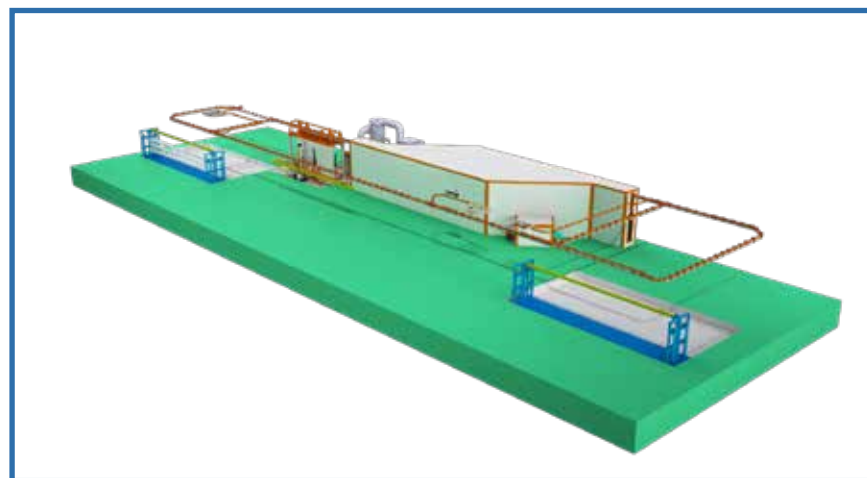


Hanna Partner Show



–LIGHT POLES, PIPE FITTINGS–

○ Engineering drawings



○ Factory show



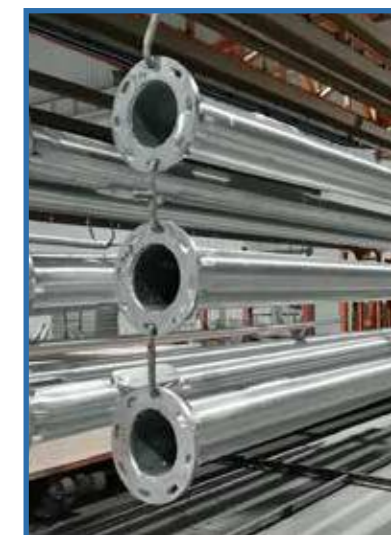
Automatic lift system for loading and unloading
Buff zone for workpiece storage and cooling
Fast and low chain speed transfer automatically
Workpiece scanning system.

Hanna



Manual Powder Coating Line

filter recovery booth
powder curing oven



–LIGHT POLES, PIPE FITTINGS–

○ Packing&Shipping



Hanna



○ Project display



Hanna Partner Show



TRACK

CONTAINER TRANSPORTATION

Project distribution



THANKS

HANNA  QUALITY

 **MOBILE PHONE:** +86 186 3213 8668(Mark Lee)

 **E-MAIL:** sales@autocoatingline.com sales@hinahcoatingline.com

 **WEB:** www.autocoatingline.com www.hinahcoatingline.com

 **Tel:** +86 311 8529 0395 **Fax:** +86 311 8529 0396

 **SALES OFFICE ADDRESS :** 8/F, Block A, Dongsheng Plaza, No. 508 Zhongshan East Road, Shijiazhuang City, Hebei Province, China.

 **FACTORY ADDRESS 1 :** High-tech Economic Development Zone, Shijiazhuang City, Hebei Province, China

FACTORY ADDRESS 2 : Hengcheng East Road Economic Development Zone, Shenzhou City, Hebei Province, China

