

FENCE PRODUCT BROCHURES

FOCUS ON PROFESSIONAL POWDER COATING SYSTEM SOLUTION

Since 1990, Hanna Technology have grown into a star company in Metal Surface Treatment.



-COMPANY INTRODUCTION-

Since 1990, Hanna Technology have grown into a star company in powder coating field. All HANNA's solutions are designed individually to meet the customized needs of our customers. From the initial design drawing to delivery, you don't have to worry about anything with HANNA's strong support. Moreover, we provide installation, commissioning and training service until your system is operating successfully.

Hinah[®]

SURFACE COATING EQUIPMENT SPECIALIST
Focus On Professional Powder Coating System Solution

★★★★★



-ABOUT US-



The factory covers an area of 10,000 square meters and employs more than 80 people. The company has passed ISO9001 quality management system certification, ISO4001 environmental management system certification, and ISO18000 occupational health and safety management system certification.

DESIGN → PRODUCTION → INSTALLATION → AFTER-SALES SERVICE



-OUR STAFF-

Hanna get a strong team to rock your core, including coating system designers, powder and chemistry experts, control systems engineers, installation technicians and experienced trainers. With Hanna's powerful team support, you would not have to worry.



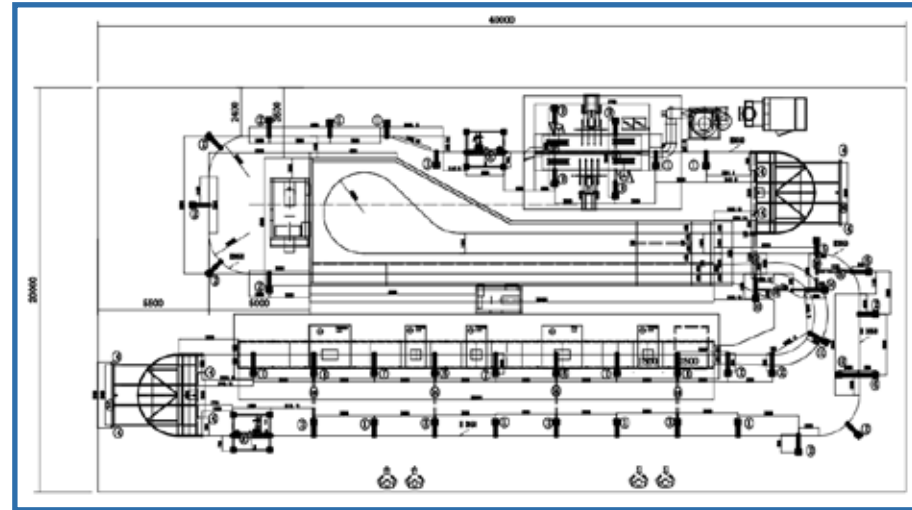
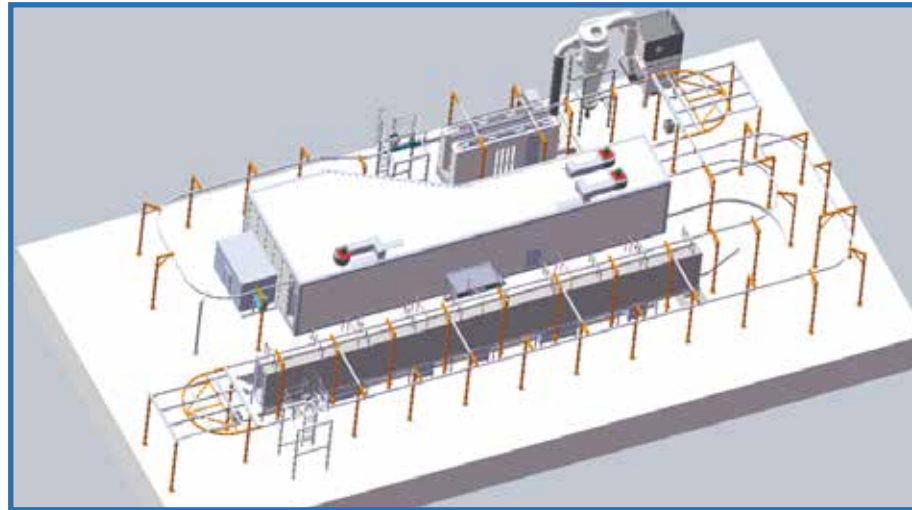
QUALIFICATION HONOR

OUR CERTIFICATE



-FENCE NETTING-

○ Engineering drawings



○ Factory Show



Project name: Fully automatic powder coating line
Products: 3D wire mesh fence
Product max. size: 3500*2500*100mm
Design capacity : 1000pcs/10h
The space size: L65*W12m
Heating source:LPG

Hanna



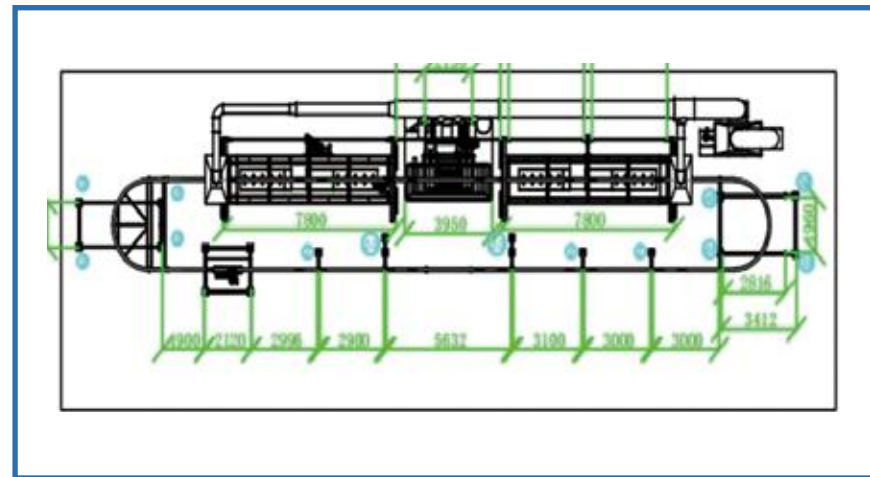
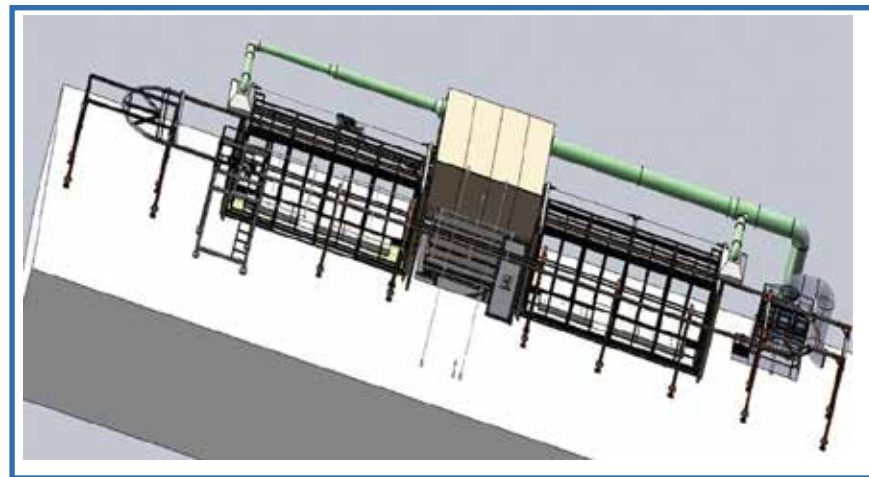
Full Automatic powder coating line With spray pretreatment

Spray PretreatmentFast Color Change BoothPowder Curing Oven



–LIGHT POLES, PIPE FITTINGS–

○ Engineering drawings



○ Factory show



Dip Coating line for fence. The the line is making for dip coating method. Pretreatment will be done separately with a dipping tank. The first step is preheating with 350°C temperature. The coating process is done through a fluidized bed. Then the workpiece moves to curing oven.

Hanna



Powder Dip Coating Line

High temperature preheating
Dipping Plasticizing and leveling



-FENCE NETTING-

○ Packing&shipping



Hanna



○ Project display

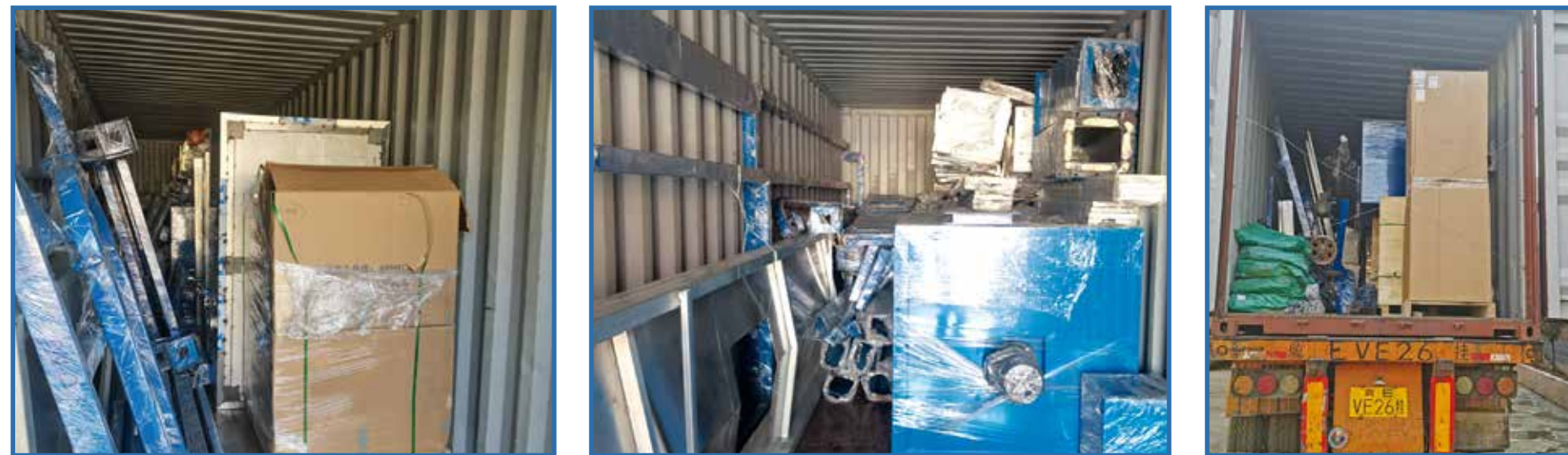


Hanna Partner Show



-FENCE NETTING-

○ Packing&Shipping



Hanna



○ Project display



Hanna Partner Show



-FENCE NETTING-

○ Engineer installation site



○ Project display



Hanna Partner Show

Hanna



TRACK

CONTAINER TRANSPORTATION

Project distribution



THANKS

HANNA  QUALITY

 **MOBILE PHONE:** +86 186 3213 8668(Mark Lee)

 **E-MAIL:** sales@autocoatingline.com sales@hinahcoatingline.com

 **WEB:** www.autocoatingline.com www.hinahcoatingline.com

 **Tel:** +86 311 8529 0395 **Fax:** +86 311 8529 0396

 **SALES OFFICE ADDRESS :** 8/F, Block A, Dongsheng Plaza, No. 508 Zhongshan East Road, Shijiazhuang City, Hebei Province, China.

 **FACTORY ADDRESS 1 :** High-tech Economic Development Zone, Shijiazhuang City, Hebei Province, China

FACTORY ADDRESS 2 : Hengcheng East Road Economic Development Zone, Shenzhou City, Hebei Province, China